



# Physical Security Technology

## A Powerful, Cost-Effective Security Force Multiplier

Although physical security is an ever-increasing concern for colleges and universities, budgetary constraints frequently preclude the addition of more security personnel. The solution is technology that expands the presence and reach of an organization's existing security force.

ICON Visual Cloud powered by VSS Alloy™ is a robust security-management solution that is purpose-built for campus environments. It is designed to leverage and enhance existing investments with *powerfully flexible technology that multiplies a security force's presence with minimal budgetary impact.*

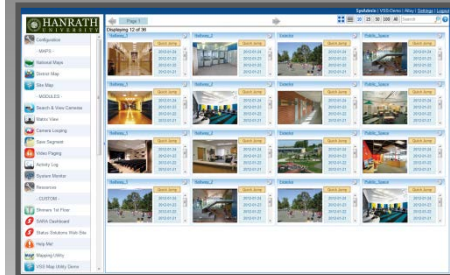
### A Single, Integrated Solution Increases Security ROI

Visual Cloud is a network-based solution that provides a single portal to manage all physical security applications, such as video surveillance and access controls. ICON's Visual Cloud **Integrated Mapping** functionality with centralized, web-based access allows users to navigate all live camera streams using individual building floor plans and campus maps. Hovering over any camera icon on a map instantly displays a live video thumbnail. The combination of cloud access to live and historical camera views of all areas of campus along with best of breed local recording and archiving provides your environment with a single portal to manage all surveillance cameras.

### Visual Cloud

Powered by VSS Alloy™

- EASY TO INTEGRATE
- EASY TO DEPLOY
- EASY TO USE



<ul style="list-style-type: none"> <li>• <b>Video Paging</b></li> </ul>	<ul style="list-style-type: none"> <li>➢ No need to continuously monitor cameras; live video streams are automatically pushed out to designated first-responders' workstations</li> <li>➢ Any physical security system, i.e. access control and emergency alert devices, can be "video enabled"</li> </ul>
<ul style="list-style-type: none"> <li>• <b>Hybrid Solution</b></li> </ul>	<ul style="list-style-type: none"> <li>➢ Bridge existing analog technologies, while phasing in IP cameras and controls as budget allows</li> </ul>
<ul style="list-style-type: none"> <li>• <b>Easy Training</b></li> </ul>	<ul style="list-style-type: none"> <li>➢ Train staff on primary functionality in less than ten minutes</li> </ul>
<ul style="list-style-type: none"> <li>• <b>Easy Integration</b></li> </ul>	<ul style="list-style-type: none"> <li>➢ Integrate with university-specific applications as well as other third-party software including physical security solutions, attendance, HVAC and lighting controls.</li> </ul>
<ul style="list-style-type: none"> <li>• <b>Multiple Profile Levels</b></li> </ul>	<ul style="list-style-type: none"> <li>➢ Each school and each staff member is assigned a profile level that grants appropriate access to their area of responsibility</li> </ul>
<ul style="list-style-type: none"> <li>• <b>Integrated Mapping</b></li> </ul>	<ul style="list-style-type: none"> <li>➢ Mapping functionality allows users to visually navigate all live camera streams using building floor plans and campus maps</li> </ul>