

# MOBILITY

EXPECT CONNECTIVITY ANYWHERE, ANYTIME



Welcome to a new age of continuous connectivity where multiple devices make 'always on, always available' mobility more than just a trend, but a critical part of the corporate DNA.



## CONNECTIVITY ANYWHERE



**1.3** By 2015, the world's mobile worker population will reach **1.3 billion** - **37.2% of the total workforce**<sup>1</sup>



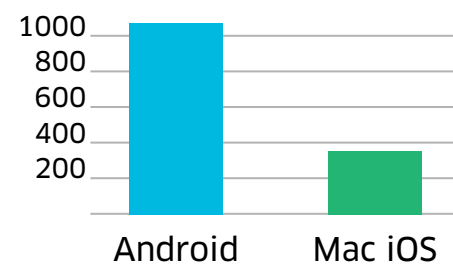
**71%** of IT decision makers have the mobility support for employees as their top priority project for the next 12 months<sup>2</sup>

## WITH ANY WIRED OR WIRELESS DEVICE

**49%** of employees believe mobile devices will become their primary work computing devices in the next 5 years<sup>3</sup>



Projected worldwide mobile device shipments by operating systems in 2014, in millions of units<sup>4</sup>



## QUALITY ACCESS TO APPLICATIONS

**73%** of those using collaborative mobile technology are more likely to report improved sales and customer acquisition than their counterparts who don't<sup>5</sup>



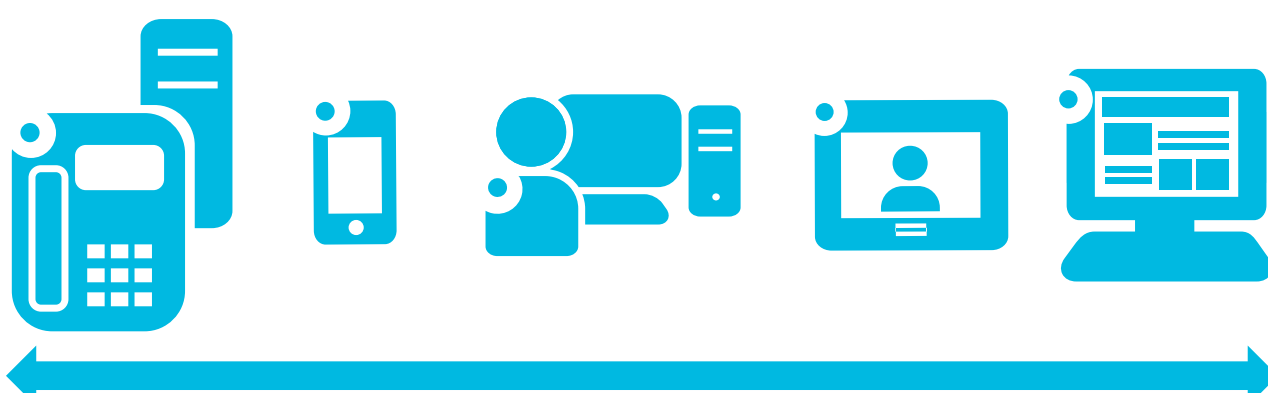
**52%** of organizations get several complaints a day from employee having trouble connecting to corporate WLAN with a mobile device<sup>6</sup>



UC&C TECHNOLOGY ENABLES EFFICIENT COLLABORATION AND INCREASES PRODUCTIVITY.

A company with 100 Employees can save: **115 minutes /day/employee** or \$920,000 annual cost savings<sup>7</sup>

## ALL WITH A CONSISTENT EXPERIENCE



## WHAT SHOULD YOU CONSIDER WHEN PLANNING YOUR NEXT NETWORK EVOLUTION?

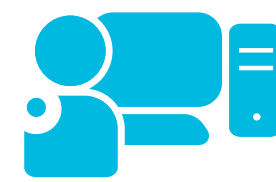
### SECURITY

**63%** will invest in Mobile & Enterprise Security in the next 12 months<sup>8</sup>



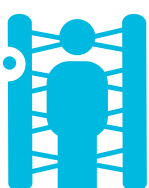
### FIXED LAN WON'T GO AWAY SOON

**77%** of enterprise PC utilization won't change (or slightly diminish) as employees adopt wireless tablets and smartphones<sup>9</sup>



### INTELLIGENCE

Networks can't remain static. To support mobility they must automatically detect the user and the device and application being used and respond accordingly.



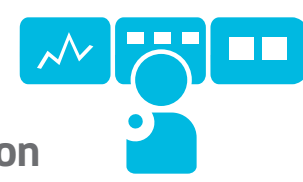
#1 lesson learned from successful mobile strategy implementations: Adopt an **integrated wired and wireless solution that can grow** with your current and future platform.



## TAKE THE RIGHT APPROACH

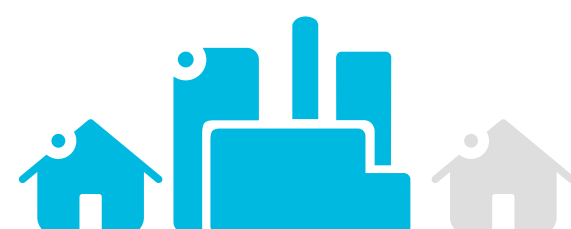
### 1 PLAN & DESIGN

- Understand your business priorities
- Know your network for a right-sized solution
- Assess your network capabilities today, plan for future needs



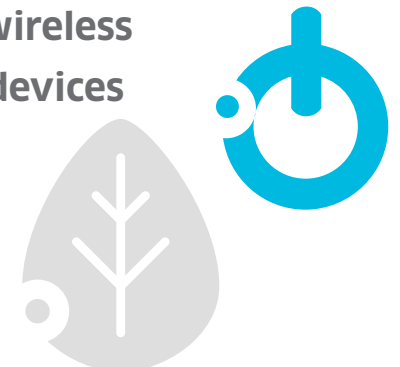
### 2 BUILD & EVOLVE

- Pervasive wireless coverage
- Right-sized LAN Core
- Optimized LAN access
- Evolve to unified access and management



### 3 BENEFIT & GROW

- Seamless, high-quality experience on wired and wireless applications
- User chooses device: corporate, personal, wired or wireless
- Automatic configuration of personal and corporate devices (Off-loads IT and secure assets)
- Self-service guest registration: Secures network and offloads IT



## IS YOUR NETWORK BUILT FOR THE MOBILE ENTERPRISE?

GET YOUR COMPLEMENTARY NETWORK ASSESSMENT >



icon voice networks

Sources:  
1 IDC Worldwide Mobile Worker Population 2011-2015 Forecast (Doc #232073)  
2 Forrester Forrester's networks and telecommunication survey Q1, 2013  
3 Samsung Mobile Index http://www.samsung.com/us/news/20351  
4 IDC Worldwide Quarterly Mobile Phone Tracker, 2014  
5 Survey by Fluke Networks  
6 The New Digital Economy - Oxford Economics  
7 Alcatel-Lucent Primary Research  
8 2013 Enterprise Mobility Exchange Survey  
9 Forrester Forrester's mobility survey Q2, 2013